

S  L T C R E E K



THE AUTHORIZATION SYSTEM





The Saltcreek authorization system is a solution for processing fuel card transactions from different petrol station networks. This solution was planned and implemented by Saltcreek and has been in operation since mid 2015. In the meantime more than a dozen different petrol station networks have been connected to the system.

The following pages describe the most important features and functions of the system.



THE MOST IMPORTANT FEATURES AT A GLANCE



ONE CENTRAL ACCESS POINT TO SERVICE STATIONS IN EUROPE AND BEYOND



NUMEROUS OPTIONS FOR CARDS, CUSTOMERS AND STATIONS



FRAUD PROTECTION



FULLY MANAGED & ON-PREMISES



MADE IN SALZBURG



ONE CENTRAL ACCESS POINT TO SERVICE STATIONS IN EUROPE AND BEYOND

The Saltcreek authorization system connects to various service station networks to process fueling operations of service stations.

Each refuelling transaction is checked and processed according to flexibly configurable rules (e.g. limits, available products, etc.).

These rules are defined at a central location and are valid immediately. This way the management of large networks with several thousand petrol stations is no problem.

Saltcreek has already connected many petrol station networks for its customers. Some of them are:



Hectronic

TOKHEIM
QUALITY



GUTMANN
Hier versorgen wir.

AVIA

NIS
PETROL
WHEREVER YOU ARE



Alvic



RATIO ELEKTRONIK_{GMH}

ANDAMUR
cada viaje importa

PETROMIRALLES

tankpool24



NUMEROUS OPTIONS FOR CARDS, CUSTOMERS AND STATIONS

The Saltcreek authorization system validates incoming transaction requests according to various rules. These rules can be applied directly to one card or to all cards of a customer. It is even possible to define rules for all of a customer's cards and to set exceptions for individual cards.

AN EXAMPLE

All cards of a customer should be unlocked only in Austria, Germany and Poland.

Only the cards of the sales team should also be usable in other countries.

Rules like these are constantly being developed in consultation with our customers.



The most important rules are:

- ✓ **Volume limits**
Limitation of the maximum permitted daily/weekly/bi-weekly delivery quantities
- ✓ **Product restrictions**
Definition of available products
- ✓ **Regional restrictions**
Restriction of card use at country/regional level
- ✓ **Card blocking**
Temporary and permanent blocking of cards
- ✓ **Prepay and postpay accounts**
Definition of maximum delivery quantities for customers
- ✓ **etc.**
Our rules can be flexibly adapted



FRAUD PROTECTION

Protection against fraud is a complex issue that cannot be addressed by a single measure. Rather, a set of actions together with great adaptability is needed to be prepared against constantly changing threats.

The Saltcreek authorization system addresses several issues:

Fraud prevention

The system reacts dynamically to certain situations and can set actions automatically. For example, cards are automatically blocked after too many invalid PIN entries and only released automatically after a certain time.

PINs can also be assigned dynamically (via App) and are then only valid for a short period. This means that stolen PINs and cloned cards can no longer cause damage.



Fraud detection

The refuelling behaviour of cards and customers is permanently monitored and evaluated over a long period of time. In case of unusual behavior, alarm messages are sent so that the operators of the system can react immediately.

Rapid response

If a case of fraud is detected, the users have various options to react quickly. They can immediately block affected stations and generate new PINs for the affected cards. The refuelling behaviour of the affected stations can be monitored in real time to see how the countermeasures taken are working.

To successfully implement long-term strategies against fraud, the Saltcreek team works closely with its clients and is constantly expanding the system. The modern system architecture allows new measures to be implemented quickly and easily.



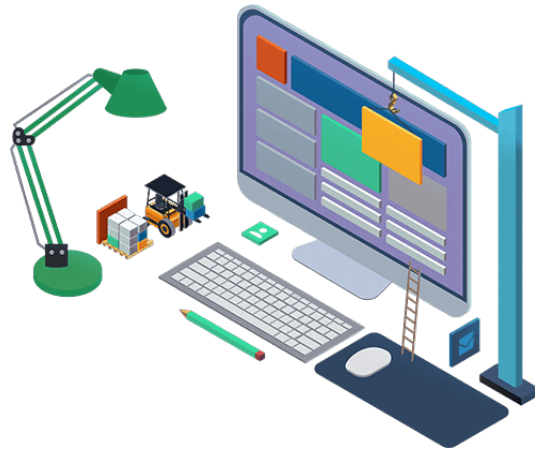
FULLY MANAGED & ON-PREMISES

Operating a state-of-the-art system requires a great deal of experience and precise knowledge of the system itself and the environment in which it is running.

We offer the Saltcreek Authorization System as a fully operated and maintained package. And we do this on our clients' terms.

This means that we work with our customers to select a suitable data center and take care of installation, operation and maintenance.

Our customers are involved in all steps and always have full access to the system and the stored data.





This offer includes the following actions:

- ✓ Installation and operation of the authorization system
- ✓ Maintenance of operating systems and databases
- ✓ Daily data backup of databases and log files
- ✓ Permanent monitoring of the system by our monitoring system
- ✓ Correction of errors and installation of new versions

Our customers have appreciated this offer for years.



MADE IN SALZBURG

The company headquarters of Saltcreek is located in the city of Salzburg. All developers work together on the Saltcreek authorization system.

We do not need any complicated communication systems to plan and implement our products together. We talk to each other every day and can therefore do our work with the highest efficiency.

ABOUT SALT CREEK

Saltcreek GmbH & Co KG is an independent software company founded in 2015 by Sebastian Gumpold and Matthias Lackenbacher.

Our goal is to develop solutions that open up new possibilities and strategies for our customers and make their existing business areas easier and more convenient to use.

To achieve this goal, we work with the following strategies:



Personal communication

We believe that personal communication is one of the most important factors for successful cooperation. Our customers talk to us personally and not via anonymous service desks or collective email addresses. Open issues and next steps are discussed regularly so that everyone knows what to do and what happens next.

One contact person

We ourselves repeatedly experience the phenomenon of being sent back and forth between several contact persons and sometimes also between partner companies. Our customers always have a contact person with us, whom they can turn to. If additional companies are involved, we take care of the further coordination for our customers.

Technical expertise

We are experts! The Saltcreek employees have in some cases over 20 years of experience in the conception, creation and operation of software. We have the knowledge to build and operate stable systems in-house and are not dependent on external companies. We are constantly developing and expanding this knowledge.



CONTACT US



Dipl.-Ing. Matthias Lackenbacher

Founder & CEO



Dipl.-Ing. Sebastian Gumpold

Founder & CEO



Saltcreek is associate member of



UID: ATU69243124, company registration number: 427480y, place of jurisdiction: Salzburg

Version 1.0.1